

Firmware Update Operating Instructions

These instructions explain how to update the firmware of the printer.

Before you start the update, make sure of the following:

- The printer is in standby mode and the [Power] key is lit in green.
- No applications are running on the computer.
- The printer is connected to the computer with a USB cable.

The firmware cannot be updated over a network. In this case, make a temporary USB connection.

1. Double-click [*Product Name*_FirmwareUpdater_VX_XX.exe] to start the update.

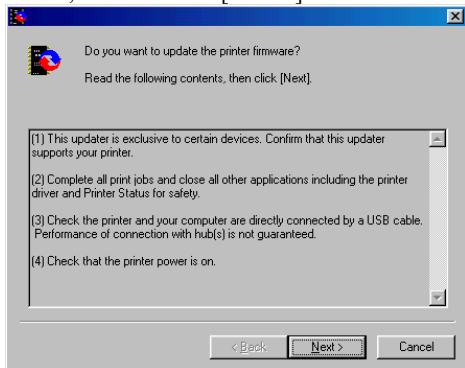
Note

- *Product Name* represents the machine name; VX_XX, the version.

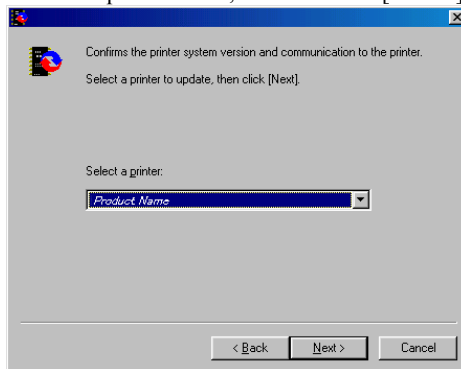
2. Select [English], and then click [OK].



3. The following screen appears. Check the displayed details, and then click [Next >].



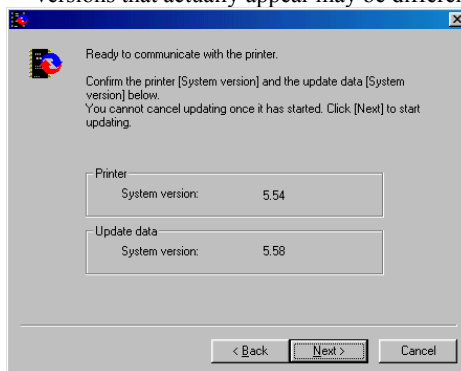
4. Select the printer name, and then click [Next >].



5. Check that the system version for [Update data] is later than the system version for [Printer], and then click [Next >].

Note

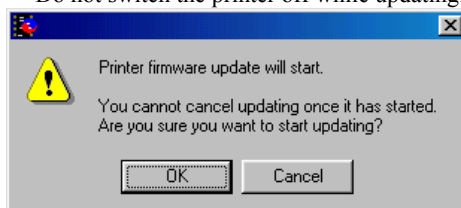
- The following screen is an example. The versions that actually appear may be different.



6. Click [OK].

Note

- Do not switch the printer off while updating.

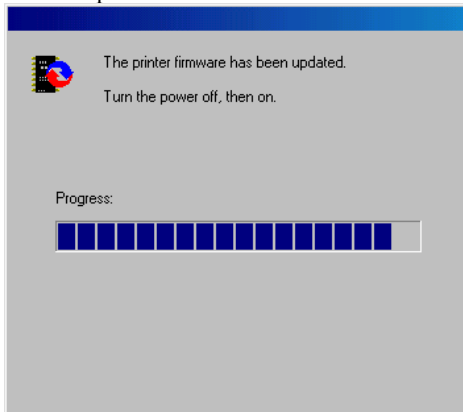


Updating starts.

7. If the following screen appears, switch the printer off and then back on.

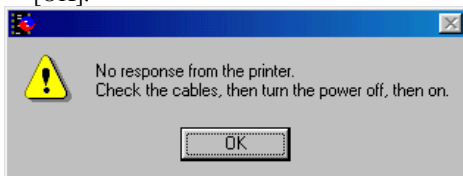
Note

- When the printer is switched back on, the progress bar advances to the end, and updating is completed.



Note

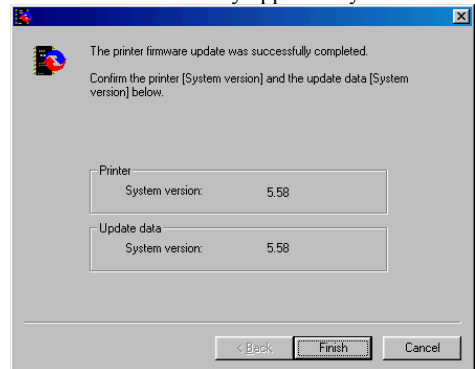
- If you do not switch the printer off and back on, the printer switches off automatically after a while so it will not be damaged.
- If the following screen appears, switch the printer off and then back on, and then click [OK].



8. After updating, check the version, and then click [Finish].

Note

- The following screen is an example. The versions that actually appear may be different.



Updating is complete.